

# Weldcraft™ A-200 Series

## Formerly WP-26 Series

Hand-Held Air-Cooled  
TIG Welding Torches



### Quick Specs

#### Models

A-200  
A-200 Valve  
A-200 Flex  
A-200 Flex Valve

A-200 Flex Redhead™  
A-200 Flex Valve Redhead™

#### Applications

Fabrication  
Maintenance and repair  
Manufacturing  
Shipbuilding  
Vocational

#### Rated Output

DC: 200 A, AC: 150 A

**Duty Cycle** 60%

#### Electrode Range

.020–5/32 in. (0.5–4.0 mm)

### A-200 Series TIG torches

Formerly known as the WP-26 Series, the A-200 Series consists of dependable, top-performing air-cooled torches designed for heavy-duty welding applications.

**Eliminate the expense** of a water-cooled system. The air-cooled capability pairs reliability with cost-effectiveness for all field applications.

**Robust performance.** The heavy copper construction delivers optimal welding capacity for rugged fieldwork.

**Effortless adjustments.** Gas control valve ensures a quick and easy adjustment of shielding gas flow (A-200 Valve).

**Flexibility.** Flexible neck easily adjusts to any angle for better torch control in limited-access joints (A-200 Flex).

**Combining the flexible neck and gas valve** advances capabilities with greater comfort and control (A-200 Flex Valve).

**Maximum versatility.** Utilize the Redhead Series torches in a variety of welding applications without adding expenses.

*Note: Torches delivered may vary slightly from images shown.*



A-200  
(WP-26)



A-200 Valve  
(WP-26V)

### Additional torch models



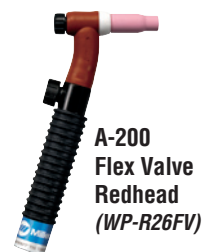
A-200  
Flex  
(WP-26F)



A-200  
Flex Valve  
(WP-26FV)



A-200  
Flex  
Redhead  
(WP-R26F)



A-200  
Flex Valve  
Redhead  
(WP-R26FV)



**Miller Electric Mfg. LLC**  
An ITW Welding Company  
1635 West Spencer Street  
P.O. Box 1079  
Appleton, WI 54912-1079 USA

**Equipment Sales US and Canada**  
Phone: 866-931-9730  
FAX: 800-637-2315  
International Phone: 920-735-4554  
International FAX: 920-735-4125

**MillerWelds.com**  
f t y i n



## Torch Packages

| Models    |                           | 1-Piece Power Cable<br>Standard Rubber |                | 2-Piece Power Cable<br>Rubber |                |
|-----------|---------------------------|--|----------------|-------------------------------|----------------|
| Old Model | New Name                  | 12.5 ft. (3.8 m)                       | 25 ft. (7.6 m) | 12.5 ft. (3.8 m)              | 25 ft. (7.6 m) |
| WP-26     | A-200                     | WP-26-12-R                             | WP-26-25-R     | WP-26-12-2                    | WP-26-25-2     |
| WP-26V    | A-200 Valve               | WP-26V-12-R                            | WP-26V-25-R    | WP-26V-12-2                   | WP-26V-25-2    |
| WP-26F    | A-200 Flex                | WP-26F-12-R                            | WP-26F-25-R    | —                             | WP-26F-25-2    |
| WP-26FV   | A-200 Flex Valve          | WP-26FV-12-R                           | WP-26FV-25-R   | WP-26FV-12-2                  | WP-26FV-25-2   |
| WP-R26F   | A-200 Flex Redhead™       | WP-R26F-12-R                           | —              | —                             | —              |
| WP-R26FV  | A-200 Flex Valve Redhead™ | —                                      | WP-R26FV-25-R  | —                             | —              |

V = Valve F = Flex FV = Flex Valve

Torch packages include torch body, handle, power cable and long back cap.

## Connectors

### 1-piece power cable connectors



**194723**  
50 mm Dinse-style gas thru  
for one-piece air-cooled torch.



**195379**  
50 mm Dinse-style for  
one-piece air-cooled torch.



**45V62**  
Power cable adapter for  
one-piece air-cooled torch.

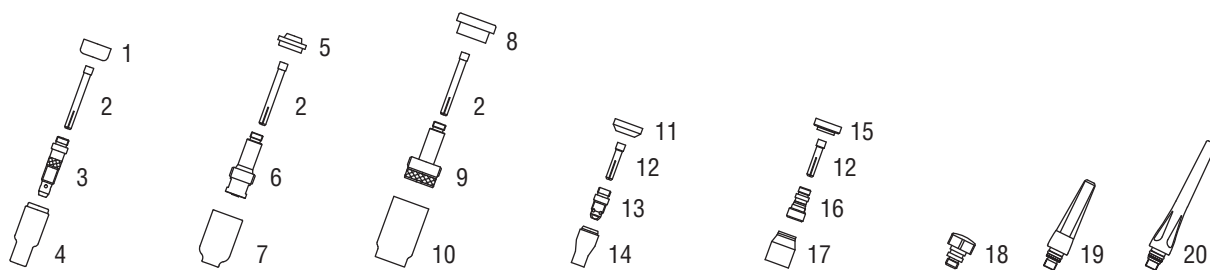
### 2-piece power cable connector



**129527**  
50 mm Dinse-style for two-piece  
cable air-cooled torch.

| Machines   | Connection Type             | 1-Piece<br>Power Cable Connectors | 2-Piece<br>Power Cable Connectors |
|--|-----------------------------|-----------------------------------|-----------------------------------|
| <b>TIG Machines</b>  |                             |                                   |                                   |
| CST™ 280   | 50 mm Dinse-style           | <b>195379</b>                     | <b>129527</b>                     |
|  | Tweco-style                 | N/A                               | <b>191981</b>                     |
| CST™ 282   | Dinse-style                 | <b>195378</b> (50 mm)             | <b>042533</b> (70 mm)             |
|  | Tweco-style                 | N/A                               | <b>191981</b>                     |
| Dynasty® 200/210/280/300/350/400   | 50 mm Dinse-style           | <b>195379</b>                     | <b>129527</b>                     |
| Maxstar® 200/210/280/350/400   | 50 mm Dinse-style           | <b>195379</b>                     | <b>129527</b>                     |
| Syncrowave® 200/210  | 50 mm Dinse-style           | <b>194723</b> (gas thru)          | <b>129527</b>                     |
| Syncrowave® 250 DX/300/350 LX/400  | 50 mm Dinse-style           | <b>195379</b>                     | <b>129527</b>                     |
|  | 1/2 in. stud                | <b>45V62</b>                      | N/A                               |
| <b>Multiprocess Machines</b>   |                             |                                   |                                   |
| Dimension™ 302/452/NT 450/650/652  | 1/2 in. stud                | <b>45V62</b>                      | N/A                               |
| Dynasty® 280 DX Multiprocess/<br>300 Multiprocess                        | 50 mm Dinse-style           | <b>195379</b>                     | <b>129527</b>                     |
| Maxstar® 280 Multiprocess  | Tweco-style                 | N/A                               | <b>191981</b>                     |
| Multimatic® 235/255  | 50 mm Dinse-style           | <b>195379</b>                     | <b>129527</b>                     |
| PipeWorx   | 1/2 in. stud                | <b>45V62</b>                      | N/A                               |
| XMT® 304/350   | 50 mm Dinse-style           | <b>195379</b>                     | <b>129527</b>                     |
| XMT® 450   | 1/2 in. stud                | <b>45V62</b>                      | N/A                               |
| <b>Engine-Driven Machines</b>  |                             |                                   |                                   |
| Most Big Blue®, Trailblazer®, Bobcat™,<br>Blue Star® and Wildcat® models | 1/2 in. stud                | <b>45V62</b>                      | N/A                               |
| Big Blue® 450 Duo CST  | 50 mm Dinse-style           | <b>195379</b>                     | <b>129527</b>                     |
| <b>Other Adapter</b>   |                             |                                   |                                   |
|  | Stud to dinse-style adapter | <b>232728</b>                     |                                   |

# Consumables (Refer to Owner's Manual for additional replacement parts.)



| Non-Gas Lens                |            |          |                |          |               |          |           |       |            |  |
|-----------------------------|------------|----------|----------------|----------|---------------|----------|-----------|-------|------------|--|
| Electrode Size — inch (mm)  | .040 (1.0) |          | 1/16 (1.6)     |          | 3/32 (2.4)    |          | 1/8 (3.2) |       | 5/32 (4.0) |  |
| 1 Insulator (required)      | 18CG       |          | 18CG           |          | 18CG          |          | 18CG      |       | 18CG       |  |
| 2 Collet                    | 10N22      |          | 10N23          |          | 10N24         |          | 10N25     |       | 54N20      |  |
| 3 Collet Body               | 10N30      |          | 10N31          |          | 10N32         |          | 10N28     |       | 406488     |  |
| Nozzle Size — size # (inch) | 4 (1/4)    | 5 (5/16) | 6 (3/8)        | 7 (7/16) | 8 (1/2)       | 10 (5/8) | 12 (3/4)  | Short |            |  |
| 4 Alumina                   | 10N50      | 10N49    | 10N48          | 10N47    | 10N46         | 10N45    | 10N44     | —     |            |  |
| * Long Alumina              | —          | 10N49L   | 10N48L         | 10N47L   | —             | —        | —         | —     |            |  |
| * Lava                      | —          | —        | 105Z44         | 105Z45   | 08N78         | —        | —         | —     |            |  |
| * Long Lava                 | —          | 105Z60   | —              | 105Z61   | —             | —        | —         | —     |            |  |
| Gas Lens                    |            |          |                |          |               |          |           |       |            |  |
| Electrode Size — inch (mm)  | .040 (1.0) |          | 1/16 (1.6)     |          | 3/32 (2.4)    |          | 1/8 (3.2) |       | 5/32 (4.0) |  |
| 5 Insulator (required)      | 54N01      |          | 54N01          |          | 54N01         |          | 54N01     |       | 54N01      |  |
| 2 Collet                    | 10N22      |          | 10N23          |          | 10N24         |          | 10N25     |       | 54N20      |  |
| 6 Gas Lens                  | 45V24      |          | 45V25          |          | 45V26         |          | 45V27     |       | 45V28      |  |
| Nozzle Size — size # (inch) | 4 (1/4)    | 5 (5/16) | 6 (3/8)        | 7 (7/16) | 8 (1/2)       | 10 (5/8) | 12 (3/4)  | Short |            |  |
| 7 Alumina Gas Lens          | 54N18      | 54N17    | 54N16          | 54N15    | 54N14         | —        | —         | 54N19 |            |  |
| * Long Gas Lens             | —          | 54N17L   | 54N16L         | 54N15L   | —             | —        | —         | —     |            |  |
| Large Diameter Gas Lens     |            |          |                |          |               |          |           |       |            |  |
| Electrode Size — inch (mm)  | .040 (1.0) |          | 1/16 (1.6)     |          | 3/32 (2.4)    |          | 1/8 (3.2) |       | 5/32 (4.0) |  |
| 8 Insulator (required)      | 54N63      |          | 54N63          |          | 54N63         |          | 54N63     |       | 54N63      |  |
| 2 Collet                    | 10N22      |          | 10N23          |          | 10N24         |          | 10N25     |       | 54N20      |  |
| 9 Large Diameter Gas Lens   | 45V0204    |          | 45V116         |          | 45V64         |          | 995795    |       | 45V63      |  |
| Nozzle Size — size # (inch) | 4 (1/4)    | 5 (5/16) | 6 (3/8)        | 7 (7/16) | 8 (1/2)       | 10 (5/8) | 12 (3/4)  | Short |            |  |
| 10 Large Dia. Gas Lens      | —          | —        | 57N75          | —        | 57N74         | 53N88    | 53N87     | 53N89 |            |  |
| * Large Dia. Gas Lens-L     | —          | —        | 57N75L         | —        | 57N74L        | 53N88L   | 53N87L    | —     |            |  |
| * Large Dia. Gas Lens-XL    | —          | —        | 57N75XL        | —        | 57N74XL       | 53N88XL  | 53N87XL   | —     |            |  |
| Stubby Non-Gas Lens         |            |          |                |          |               |          |           |       |            |  |
| Electrode Size — inch (mm)  | .040 (1.0) |          | 1/16 (1.6)     |          | 3/32 (2.4)    |          | 1/8 (3.2) |       |            |  |
| 11 Insulator (required)     | 18CG20     |          | 18CG20         |          | 18CG20        |          | 18CG20    |       | 18CG20     |  |
| 12 Stubby Collet            | 10N22S     |          | 10N23S         |          | 10N24S        |          | 10N25S    |       | 10N25S     |  |
| 13 Stubby Collet Body       | 17CB20     |          | 17CB20         |          | 17CB20        |          | 17CB20    |       | 17CB20     |  |
| Nozzle Size — size # (inch) | 4 (1/4)    | 5 (5/16) | 6 (3/8)        | 7 (7/16) | 8 (1/2)       | 10 (5/8) | 12 (3/4)  | Short |            |  |
| 14 Stubby Alumina           | 13N08      | 13N09    | 13N10          | 13N11    | 13N12         | 13N13    | —         | —     |            |  |
| Stubby Gas Lens             |            |          |                |          |               |          |           |       |            |  |
| Electrode Size — inch (mm)  | .040 (1.0) |          | 1/16 (1.6)     |          | 3/32 (2.4)    |          | 1/8 (3.2) |       |            |  |
| 15 Insulator (required)     | 17GLG20    |          | 17GLG20        |          | 17GLG20       |          | 17GLG20   |       | 17GLG20    |  |
| 12 Stubby Collet            | 10N22S     |          | 10N23S         |          | 10N24S        |          | 10N25S    |       | 10N25S     |  |
| 16 Stubby Gas Lens          | 17GL040    |          | 17GL116        |          | 17GL332       |          | 17GL18    |       | 17GL18     |  |
| Nozzle Size — size # (inch) | 4 (1/4)    | 5 (5/16) | 6 (3/8)        | 7 (7/16) | 8 (1/2)       | 10 (5/8) | 12 (3/4)  | Short |            |  |
| 17 Alumina Gas Lens         | 53N58      | 53N59    | 53N60          | 53N61    | 53N61S        | —        | —         | —     |            |  |
| Back Caps                   |            |          |                |          |               |          |           |       |            |  |
| 18 Short                    | 57Y04      |          | 19 Medium 300M |          | 20 Long 57Y02 |          |           |       |            |  |

\*Not shown.

# Tungsten

## Tungsten for the most demanding TIG welding applications!

Available in four types and industry-standard diameters, our line of Weldcraft™ tungsten electrodes has undergone rigorous testing to ensure the highest quality and durability. Color-coded packages include ten 7-inch (175 mm) tungsten electrodes.

*Note: Refer to manufacturer SDS sheets for proper preparation and safety. Use proper ventilation/capture during preparation. Refer to manufacturer warning regarding ventilation.*



| Type   | Diameter in. (mm) | Part #          | Type  | Diameter in. (mm) | Part #         |
|--|-------------------|-----------------|---|-------------------|----------------|
| <b>2% Ceriated (EWCe-2)</b>  |                   |                 | <b>Pure (EWP)</b>   |                   |                |
| Performs well in DC welding and arc starting at low-current settings, and offers excellent performance in AC processes.                    | 0.040 (1.0)       | <b>WC040X7</b>  | Forms a clean, balled end when heated and provides good arc stability for AC welding with a balanced or unbalanced squarewave or sine wave. | 0.040 (1.0)       | —              |
|  | 1/16 (1.6)        | <b>WC116X7</b>  |   | 1/16 (1.6)        | <b>WP116X7</b> |
|  | 3/32 (2.4)        | <b>WC332X7</b>  |   | 3/32 (2.4)        | <b>WP332X7</b> |
|  | 1/8 (3.2)         | <b>WC018X7</b>  |   | 1/8 (3.2)         | <b>WP018X7</b> |
|  | 5/32 (4.0)        | <b>WC532X7</b>  |   | 5/32 (4.0)        | —              |
| <b>2% Lanthanated (EWLa-2)</b>   |                   |                 | <b>Rare Earth (EWG)</b>   |                   |                |
| Provides excellent arc starting, arc stability and re-ignition, and less tip erosion in AC or DC welding. Can substitute for 2% Thoriated. | 0.040 (1.0)       | <b>WL2040X7</b> | Combines the best of all alloying elements, and provides excellent arc stability in AC or DC welding.                                       | 0.040 (1.0)       | —              |
|  | 1/16 (1.6)        | <b>WL2116X7</b> |   | 1/16 (1.6)        | <b>WG116X7</b> |
|  | 3/32 (2.4)        | <b>WL2332X7</b> |   | 3/32 (2.4)        | <b>WG332X7</b> |
|  | 1/8 (3.2)         | <b>WL2018X7</b> |   | 1/8 (3.2)         | <b>WG018X7</b> |
|  | 5/32 (4.0)        | <b>WL2532X7</b> |   | 5/32 (4.0)        | —              |

## Replacement Parts

| Torch Bodies                   |                         |                       |
|--------------------------------|-------------------------|-----------------------|
| A-200                          |                         | <b>WP-26</b>          |
| A-200 Valve                    |                         | <b>WP-26V</b>         |
| A-200 Flex                     |                         | <b>WP-26F</b>         |
| A-200 Flex Valve               |                         | <b>WP-26FV</b>        |
| A-200 Redhead™ Flex            |                         | <b>WP-R26F</b>        |
| A-200 Redhead™ Flex Valve      |                         | <b>WP-R26FV</b>       |
| Handles                        |                         |                       |
| A-200 (ribbed)                 |                         | <b>H-200R</b>         |
| A-200 Valve (knurled)          |                         | <b>H-200</b>          |
| A-200 Flex (ribbed)            |                         | <b>10N15R</b>         |
| A-200 Flex Valve (knurled)     |                         | <b>10N15</b>          |
| Valve Knob                     |                         |                       |
| All valve models               |                         | <b>VS-1</b>           |
| Flex Head Only                 |                         |                       |
| A-200 Flex/Flex Valve          |                         | <b>26F</b>            |
| A-200 Redhead™ Flex/Flex Valve |                         | <b>R26F</b>           |
| Power Cables                   |                         |                       |
|                                | <b>12.5 ft. (3.8 m)</b> | <b>25 ft. (7.6 m)</b> |
| 1-Piece Rubber                 | <b>46V28R</b>           | <b>46V30R</b>         |
| 2-Piece Rubber                 | <b>46V28-2</b>          | <b>46V30-2</b>        |

## Genuine Miller® Accessories



**Gas Lens Kit AK3GL**  
Includes one short back cap, one of each size (#6, #7, #8) alumina nozzle, and one of each size (1/16, 3/32, 1/8 inch) of the following: gas lens, collet, and 7-inch 2% ceriated tungsten electrode.



**Accessory Kit AK3C**  
Includes one short back cap, one of each size (#5, #6, #8) alumina nozzle, and one of each size (1/16, 3/32, 1/8 inch) of the following: collet, collet body, and 7-inch 2% ceriated tungsten electrode.

**Extension Kit EK325R** 25 ft. (7.6 m), rubber



**Cable Covers WC-3-10**  
10 ft. (3 m)  
**WC-3-22**  
22 ft. (6.7 m)



**Wireless Remote Foot Control 301580**  
For remote current and contactor control. Receiver plugs directly into the 14-pin receptacle of Miller machine. 90-foot (27.4 m) operating range.



**Wireless Remote Hand Control 301582**  
For remote current and contactor control. Receiver plugs directly into the 14-pin receptacle of Miller machine. 300-foot (91.4 m) operating range.



**RCC-14 Remote Contactor and Current Control 151086**  
East/west rotary-motion fingertip control attaches to TIG torch using two hook-and-loop fasteners. Includes 26.5-foot (8 m) cord with 14-pin plug.



**RCCS-14 Remote Contactor and Current Control 043688**  
North/south rotary-motion fingertip control attaches to TIG torch using two hook-and-loop fasteners. Includes 26.5-foot (8 m) cord with 14-pin plug.

Distributed by:

