

Weldcraft™ A-150 Series

Formerly WP-17 Series

Hand-Held Air-Cooled
TIG Welding Torches 

Quick Specs	Models	Applications	Rated Output
	A-150	Fabrication	DC: 150 A, AC: 115 A
	A-150 Valve	Maintenance and repair	Duty Cycle 60%
	A-150 Flex	Aerospace	Electrode Range
	A-150 Flex Valve	Food and beverage industry	.020–1/8 in. (0.5–3.2 mm)
	A-150 Flex Valve Redhead™	Metal art	
		Petro/chemical	
		Shipboard installation/repair	

A-150 Series TIG torches

Formerly known as the WP-17 Series, the A-150 Series is comprised of an assortment of versatile and innovative air-cooled torches designed for maximum comfort in a variety of applications. The A-150 Series torches are a cost-effective alternative to complex water-cooled systems.

Diamond Grip™ head design has ergonomic contact points for thumb and fingers. Provides a more comfortable grip and reduces operator fatigue (A-150 and A-150 Valve).

Improve control and comfort with a flexible neck that allows access into hard-to-reach areas (A-150 Flex).

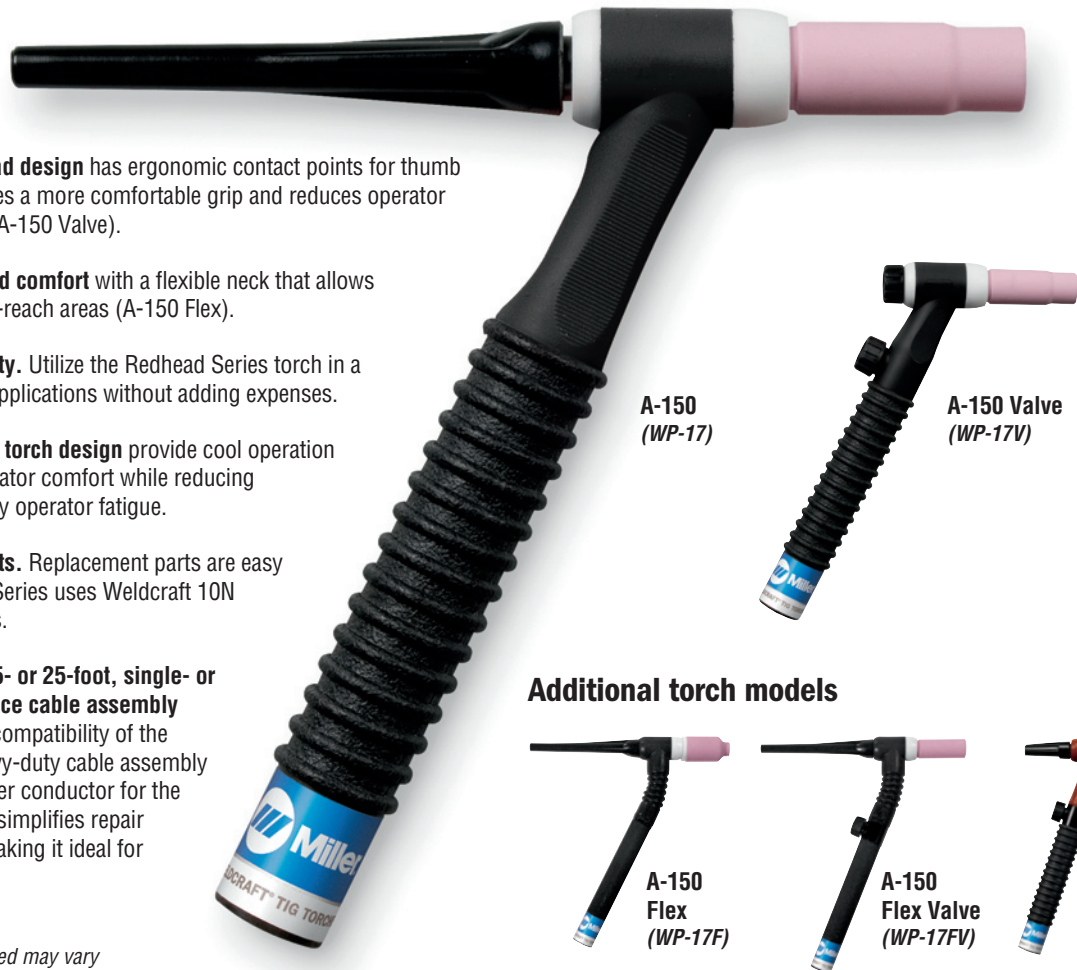
Maximum versatility. Utilize the Redhead Series torch in a variety of welding applications without adding expenses.

Ribbed handle and torch design provide cool operation and maximum operator comfort while reducing downtime caused by operator fatigue.

Utilize existing parts. Replacement parts are easy to find. The A-150 Series uses Weldcraft 10N series consumables.

Available with 12.5- or 25-foot, single- or heavy-duty two-piece cable assembly determined by the compatibility of the power source. Heavy-duty cable assembly allows use of a larger conductor for the power cable which simplifies repair and replacement making it ideal for field applications.

Note: Torches delivered may vary slightly from images shown.



Additional torch models



Miller Electric Mfg. LLC
An ITW Welding Company
1635 West Spencer Street
P.O. Box 1079
Appleton, WI 54912-1079 USA

Equipment Sales US and Canada
Phone: 866-931-9730
FAX: 800-637-2315
International Phone: 920-735-4554
International FAX: 920-735-4125

MillerWelds.com



Torch Packages

Models		1-Piece Power Cable Standard Rubber		1-Piece Power Cable Mono-Flex™		2-Piece Power Cable Rubber	
Old Model	New Name	12.5 ft. (3.8 m)	25 ft. (7.6 m)	12.5 ft. (3.8 m)	25 ft. (7.6 m)	12.5 ft. (3.8 m)	25 ft. (7.6 m)
WP-17	A-150	WP-17-12-R	WP-17-25-R	WP-17-12-MF	WP-17-25-MF	WP-17-12-2	WP-17-25-2
WP-17V	A-150 Valve	WP-17V-12-R	WP-17V-25-R	WP-17V-12-MF	WP-17V-25-MF	WP-17V-12-2	WP-17V-25-2
WP-17F	A-150 Flex	WP-17F-12-R	WP-17F-25-R	—	—	—	WP-17F-25-2
WP-17FV	A-150 Flex Valve	WP-17FV-12-R	WP-17FV-25-R	—	—	WP-17FV-12-2	WP-17FV-25-2
WP-R17FV	A-150 Flex Valve Redhead™	WP-R17FV-12-R	WP-R17FV-25-R	—	—	—	—

V = Valve F = Flex FV = Flex Valve

Torch packages include torch body, handle, power cable and long back cap.

Connectors

1-piece power cable connectors



273483
25 mm (small) Dinse-style gas thru for one-piece air-cooled torch.



194722
50 mm Dinse-style gas thru for one-piece air-cooled torch.



195378
50 mm Dinse-style for one-piece air-cooled torch.



105257
Power cable adapter for one-piece air-cooled torch.

2-piece power cable connectors



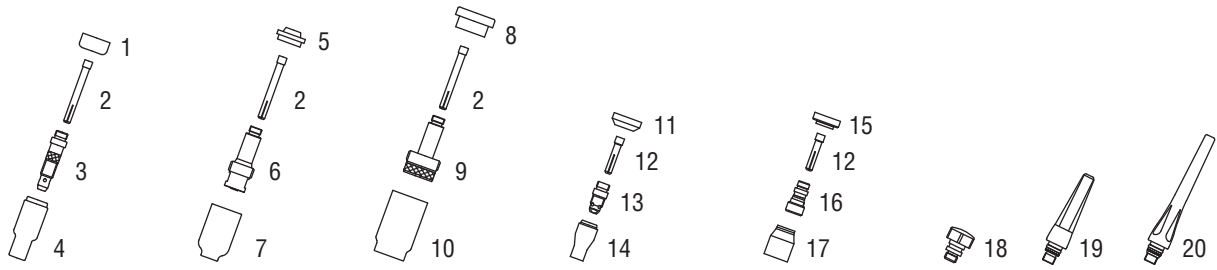
127836
25 mm (small) Dinse-style for two-piece cable air-cooled torch.



129527
50 mm Dinse-style for two-piece cable air-cooled torch.

Machines	Connection Type	1-Piece Power Cable Connectors	2-Piece Power Cable Connectors
TIG Machines			
CST™ 280	50 mm Dinse-style	195378	129527
	Tweco-style	N/A	191981
CST™ 282	Dinse-style	195378 (50 mm)	042533 (70 mm)
	Tweco-style	N/A	191981
Dynasty® 200/210/280/300/350/400	50 mm Dinse-style	195378	129527
Maxstar® 150 STL/STH, 161 STL/STH	25 mm (small) Dinse-style	273483 (gas thru)	127836
Maxstar® 200/210/280/350/400	50 mm Dinse-style	195378	129527
Syncrowave® 200/210	50 mm Dinse-style	194722 (gas thru)	129527
Syncrowave® 250 DX/300/350 LX/400	50 mm Dinse-style	195378	129527
	1/2 in. stud	105257	N/A
Multiprocess Machines			
Dimension™ 302/452/NT 450/650/652	1/2 in. stud	105257	N/A
Dynasty® 280 DX Multiprocess/ 300 Multiprocess	50 mm Dinse-style	195378	129527
Maxstar® 280 Multiprocess	Tweco-style	N/A	191981
Multimatic® 200/215/220 AC/DC	25 mm (small) Dinse-style	273483 (gas thru)	127836
Multimatic® 235/255	50 mm Dinse-style	195378	129527
PipeWorx	1/2 in. stud	105257	N/A
XMT® 304/350	50 mm Dinse-style	195378	129527
XMT® 450	1/2 in. stud	105257	N/A
Engine-Driven Machines			
Most Big Blue®, Trailblazer®, Bobcat™, Blue Star® and Wildcat® models	1/2 in. stud	105257	N/A
Big Blue® 450 Duo CST	50 mm Dinse-style	195378	129527
Other Adapter			
	Stud to Dinse-style adapter	232728	

Consumables (Refer to Owner's Manual for additional replacement parts.)



Non-Gas Lens								
Electrode Size — inch (mm)	.040 (1.0)		1/16 (1.6)		3/32 (2.4)		1/8 (3.2)	
1 Insulator (required)	18CG		18CG		18CG		18CG	
2 Collet	10N22		10N23		10N24		10N25	
3 Collet Body	10N30		10N31		10N32		10N28	
Nozzle Size — size # (inch)	4 (1/4)	5 (5/16)	6 (3/8)	7 (7/16)	8 (1/2)	10 (5/8)	12 (3/4)	Short
4 Alumina	10N50	10N49	10N48	10N47	10N46	10N45	10N44	—
* Long Alumina	—	10N49L	10N48L	10N47L	—	—	—	—
* Lava	—	—	105Z44	105Z45	08N78	—	—	—
* Long Lava	—	105Z60	—	105Z61	—	—	—	—
Gas Lens								
Electrode Size — inch (mm)	.040 (1.0)		1/16 (1.6)		3/32 (2.4)		1/8 (3.2)	
5 Insulator (required)	54N01		54N01		54N01		54N01	
2 Collet	10N22		10N23		10N24		10N25	
6 Gas Lens	45V24		45V25		45V26		45V27	
Nozzle Size — size # (inch)	4 (1/4)	5 (5/16)	6 (3/8)	7 (7/16)	8 (1/2)	10 (5/8)	12 (3/4)	Short
7 Alumina Gas Lens	54N18	54N17	54N16	54N15	54N14	—	—	54N19
* Long Gas Lens	—	54N17L	54N16L	54N15L	—	—	—	—
Large Diameter Gas Lens								
Electrode Size — inch (mm)	.040 (1.0)		1/16 (1.6)		3/32 (2.4)		1/8 (3.2)	
8 Insulator (required)	54N63		54N63		54N63		54N63	
2 Collet	10N22		10N23		10N24		10N25	
9 Large Diameter Gas Lens	45V0204		45V116		45V64		995795	
Nozzle Size — size # (inch)	4 (1/4)	5 (5/16)	6 (3/8)	7 (7/16)	8 (1/2)	10 (5/8)	12 (3/4)	Short
10 Large Dia. Gas Lens	—	—	57N75	—	57N74	53N88	53N87	53N89
* Large Dia. Gas Lens-L	—	—	57N75L	—	57N74L	53N88L	53N87L	—
* Large Dia. Gas Lens-XL	—	—	57N75XL	—	57N74XL	53N88XL	53N87XL	—
Stubby Non-Gas Lens								
Electrode Size — inch (mm)	.040 (1.0)		1/16 (1.6)		3/32 (2.4)		1/8 (3.2)	
11 Insulator (required)	18CG20		18CG20		18CG20		18CG20	
12 Stubby Collet	10N22S		10N23S		10N24S		10N25S	
13 Stubby Collet Body	17CB20		17CB20		17CB20		17CB20	
Nozzle Size — size # (inch)	4 (1/4)	5 (5/16)	6 (3/8)	7 (7/16)	8 (1/2)	10 (5/8)	12 (3/4)	Short
14 Stubby Alumina	13N08	13N09	13N10	13N11	13N12	13N13	—	—
Stubby Gas Lens								
Electrode Size — inch (mm)	.040 (1.0)		1/16 (1.6)		3/32 (2.4)		1/8 (3.2)	
15 Insulator (required)	17GLG20		17GLG20		17GLG20		17GLG20	
12 Stubby Collet	10N22S		10N23S		10N24S		10N25S	
16 Stubby Gas Lens	17GL040		17GL116		17GL332		17GL18	
Nozzle Size — size # (inch)	4 (1/4)	5 (5/16)	6 (3/8)	7 (7/16)	8 (1/2)	10 (5/8)	12 (3/4)	Short
17 Alumina Gas Lens	53N58	53N59	53N60	53N61	53N61S	—	—	—
Back Caps								
18 Short	57Y04		19 Medium 300M		20 Long 57Y02			

*Not shown.

Tungsten

Tungsten for the most demanding TIG welding applications!

Available in four types and industry-standard diameters, our line of Weldcraft™ tungsten electrodes has undergone rigorous testing to ensure the highest quality and durability. Color-coded packages include ten 7-inch (175 mm) tungsten electrodes.

Note: Refer to manufacturer SDS sheets for proper preparation and safety. Use proper ventilation/capture during preparation. Refer to manufacturer warning regarding ventilation.



Type	Diameter in. (mm)	Part #	Type	Diameter in. (mm)	Part #
2% Ceriated (EWCe-2)			Pure (EWP)		
Performs well in DC welding and arc starting at low-current settings, and offers excellent performance in AC processes.	0.040 (1.0)	WC040X7	Forms a clean, balled end when heated and provides good arc stability for AC welding with a balanced or unbalanced squarewave or sine wave.	0.040 (1.0)	—
	1/16 (1.6)	WC116X7		1/16 (1.6)	WP116X7
	3/32 (2.4)	WC332X7		3/32 (2.4)	WP332X7
	1/8 (3.2)	WC018X7		1/8 (3.2)	WP018X7
	5/32 (4.0)	WC532X7		5/32 (4.0)	—
2% Lanthanated (EWLa-2)			Rare Earth (EWG)		
Provides excellent arc starting, arc stability and re-ignition, and less tip erosion in AC or DC welding. Can substitute for 2% Thoriated.	0.040 (1.0)	WL2040X7	Combines the best of all alloying elements, and provides excellent arc stability in AC or DC welding.	0.040 (1.0)	—
	1/16 (1.6)	WL2116X7		1/16 (1.6)	WG116X7
	3/32 (2.4)	WL2332X7		3/32 (2.4)	WG332X7
	1/8 (3.2)	WL2018X7		1/8 (3.2)	WG018X7
	5/32 (4.0)	WL2532X7		5/32 (4.0)	—

Replacement Parts

Torch Bodies		
A-150		WP-17
A-150 Valve		WP-17V
A-150 Flex		WP-17F
A-150 Flex Valve		WP-17FV
A-150 Flex Valve Redhead™		WP-R17FV
Handles		
A-150 (ribbed)		H-100R
A-150 Valve (knurled)		H-100
A-150 Flex (ribbed)		105Z55R
A-150 Flex Valve (knurled)		105Z55
Valve Knob		
All valve models		VS-2
Flex Head Only		
A-150 Flex/Flex Valve		17F
A-150 Flex Valve Redhead™		R17F
Power Cables		
	12.5 ft. (3.8 m)	25 ft. (7.6 m)
1-Piece Rubber	57Y01R	57Y03R
Mono Flex™	57Y01MF	57Y03MF
2-Piece Rubber	57Y01-2	57Y03-2

Genuine Miller® Accessories

Gas Lens Kit AK3GL
Includes one short back cap, one of each size (#6, #7, #8) alumina nozzle, and one of each size (1/16, 3/32, 1/8 inch) of the following: gas lens, collet, and 7-inch 2% ceriated tungsten electrode.



Accessory Kit AK2C
Includes one short back cap, one of each size (#4, #5, #6) alumina nozzle, and one of each size (.040, 1/16, 3/32 inch) of the following: collet, collet body, and 7-inch 2% ceriated tungsten electrode.



Accessory Kit AK-150MFC
Allows welding operators to customize their standard A-150 (WP-17) or A-125 (WP-9) TIG torch for their specific application. Kit converts into 28 different torch styles while using the A-150 and A-125 existing cable. Features collets, collet bodies, nozzles, torch heads, handle and more.

Extension Kit EK-2-25-R 25 ft. (7.6 m), rubber



Cable Covers
WC-3-10 10 ft. (3 m)
WC-3-22 22 ft. (6.7 m)



Wireless Remote Foot Control 301580
For remote current and contactor control. Receiver plugs directly into the 14-pin receptacle of Miller machine. 90-foot (27.4 m) operating range.



Wireless Remote Hand Control 301582
For remote current and contactor control. Receiver plugs directly into the 14-pin receptacle of Miller machine. 300-foot (91.4 m) operating range.



RCC-14 Remote Contactor and Current Control 151086
East/west rotary-motion fingertip control attaches to TIG torch using two hook-and-loop fasteners. Includes 26.5-foot (8 m) cord with 14-pin plug.



RCCS-14 Remote Contactor and Current Control 043688
North/south rotary-motion fingertip control attaches to TIG torch using two hook-and-loop fasteners. Includes 26.5-foot (8 m) cord with 14-pin plug.

Distributed by:

