

Weldcraft™ Modular Series Hand-Held TIG Welding Torches



Quick Specs	Models	Type	Rated Output*	Duty Cycle	Electrode Range*
	A-150 Modular / A-150 Modular Valve	Air-cooled	DC: 150 A, AC: 105 A	60%	.020–1/8 in. (0.5–3.2 mm)
	A-200 Modular Valve	Air-cooled	DC: 200 A, AC: 150 A	60%	.020–5/32 in. (0.5–4.0 mm)
	W-225 Modular	Water-cooled	DC: 225 A, AC: 160 A	100%	.020–5/32 in. (0.5–4.0 mm)

*See page 3.

Modular Series TIG torches

The Modular Series is engineered with high-performing air-cooled and water-cooled technology to ensure that you can weld multiple joint configurations for various applications and angles.



Note: Torches delivered may vary slightly from images shown.

Built-in, efficient cooling system reduces overheating to extend parts and consumable life.

Modular design minimizes costs and downtime for torch changeover and parts inventory.

Easy configurable head options provide greater versatility and joint access, and minimize downtime for torch changeover.

Gas valve provides greater shielding gas flow control (A-150 Modular Valve and A-200 Modular Valve).



Miller Electric Mfg. LLC
 An ITW Welding Company
 1635 West Spencer Street
 P.O. Box 1079
 Appleton, WI 54912-1079 USA

Equipment Sales US and Canada
 Phone: 866-931-9730
 FAX: 800-637-2315
 International Phone: 920-735-4554
 International FAX: 920-735-4125

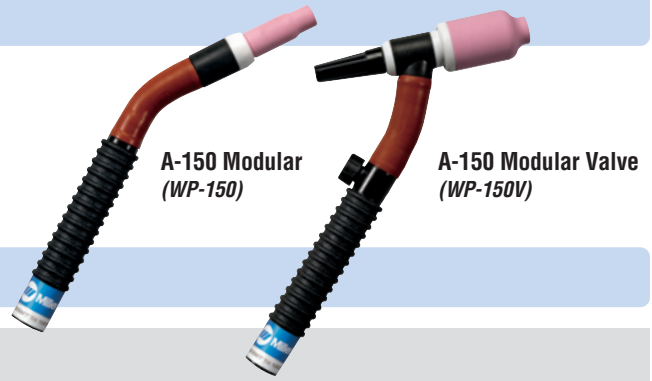
MillerWelds.com



A-150 Modular Series

Applications Fabrication, maintenance and repair, aerospace, metal art, food and beverage industry, petro/chemical, shipbuilding

Type	Rated Output	Duty Cycle	Electrode Range
Air-cooled	DC: 150 A, AC: 105 A	60%	.020–1/8 in. (0.5–3.2 mm)



A-150 Modular Series Torch Packages

Models		1-Piece Power Cable Rubber	
Old Model	New Name	12.5 ft. (3.8 m)	25 ft. (7.6 m)
WP-150	A-150 Modular	WP-150-12-R	WP-150-25-R
WP-150V	A-150 Modular Valve	WP-150V-12-R	WP-150V-25-R

V = Valve

Torch packages include torch body, handle, power cable, 150CE and 150SE elements, and 1726 and 9-70 torch heads.

A-200 Modular Series

Applications Fabrication, maintenance and repair, manufacturing, shipbuilding, vocational

Type	Rated Output	Duty Cycle	Electrode Range
Air-cooled	DC: 200 A, AC: 150 A	60%	.020–5/32 in. (0.5–4.0 mm)



A-200 Modular Series Torch Packages

Models		1-Piece Power Cable Rubber	
Old Model	New Name	12.5 ft. (3.8 m)	25 ft. (7.6 m)
WP-200V	A-200 Modular Valve	WP-200V-12-R	WP-200V-25-R

V = Valve

Torch packages include torch body, handle, power cable, 200CE and 200SE elements, and 1726 and 1726P torch heads.

Individual Components

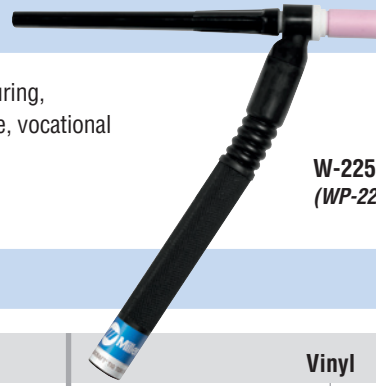
Component	A-150 Modular	A-200 Modular
Torch Body	150TB	200TB
Valve Torch Body	150VTB	200VTB
Flexible Element	150CE	200CE
Solid Element	150SE	200SE
Handle	105Z55R	10N15R

W-225 Modular Series

Applications Aerospace, dairy, food and beverage industry, light and heavy manufacturing, maintenance and repair, petro/chemical, precision fabrication, shipbuilding, tube and pipe, vocational

Type Water-cooled
Rated Output DC: 225 A, AC: 160 A
Duty Cycle 100%
Electrode Range .020–5/32 in. (0.5–4.0 mm)

W-225 Modular
(WP-225)



W-225 Modular Series Torch Packages

Models		Braided Rubber		Vinyl	
Old Model	New Name	12.5 ft. (3.8 m)	25 ft. (7.6 m)	12.5 ft. (3.8 m)	25 ft. (7.6 m)
WP-225	W-225 Modular	WP-225-12-R	WP-225-25-R	WP-225-12	WP-225-25

Torch packages include torch body, handle, power cable, gas hose, water hose, and 1726 and 9-70 torch heads.

Torch Heads



Torch Head	Angle	Electrode Range	A-150 Modular*		A-200 Modular*			W-225 Modular**	
			DC	Amp Rating	DC	Amp Rating	AC	DC	Amp Rating
24	70°	.020–3/32 in. (0.5–2.4 mm)	80	50	80	50	160	115	
24-90	90°	.020–3/32 in. (0.5–2.4 mm)	80	50	80	50	160	115	
9-70	70°	.020–1/8 in. (0.5–3.2 mm)	125	100	125	100	200	140	
9-90	90°	.020–1/8 in. (0.5–3.2 mm)	125	100	125	100	200	140	
9P	180°	.020–1/8 in. (0.5–3.2 mm)	125	100	125	100	200	140	
1726	70°	.020–5/32 in. (0.5–4.0 mm)	150	115	200	140	225	160	
1726P	180°	.020–5/32 in. (0.5–4.0 mm)	150	115	200	140	225	160	

*60% duty cycle. **100% duty cycle.

Modular Series Connectors

A-150 / A-200 1-piece power cable connectors



273483
25 mm (small) Dinse-style gas thru for one-piece A-150 torch.



194722 / 194723
50 mm Dinse-style gas thru for one-piece air-cooled torch.



195378 / 195379
50 mm Dinse-style for one-piece air-cooled torch.



105Z57
Power cable adapter for one-piece A-150 torch.



45V62
Power cable adapter for one-piece A-200 torch.

A-150 / A-200 2-piece power cable connectors



127836
25 mm (small) Dinse-style for two-piece cable A-150 torch.



129527
50 mm Dinse-style for two-piece cable air-cooled torch.

W-225 power cable connectors



195377
50 mm Dinse-style with water return line for water-cooled torch.



195380
50 mm Dinse-style gas thru with gas and water return lines for water-cooled torch.



225028
50 mm thread-lock-style for water-cooled torch.

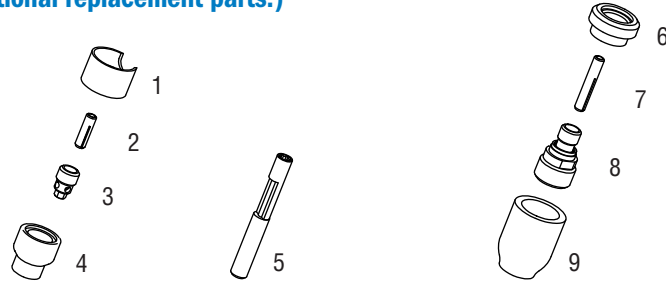


45V11
Power cable adapter for water-cooled torch.

Machines	Connection Type	A-150 Power Cable Connectors		A-200 Power Cable Connectors		W-225 Power Cable Connectors
		1-Piece	2-Piece	1-Piece	2-Piece	
TIG Machines						
CST® 280	50 mm Dinse-style	195378	129527	195379	129527	195377
	Tweco-style	N/A	191981	N/A	191981	N/A
CST® 282	Dinse-style	195378 (50 mm)	042533 (70 mm)	195379 (50 mm)	042533 (70 mm)	195377 (50 mm)
	Tweco-style	N/A	191981	N/A	191981	N/A
Dynasty® 200/210/280/300/350/400	50 mm Dinse-style	195378	129527	195379	129527	195377
Dynasty® 700/800	50 mm thread-lock	N/A	N/A	N/A	N/A	225028
Maxstar® 150 STL/STH, 161 STL/STH	25 mm Dinse-style	273483 (gas thru)	127836	N/A	N/A	N/A
Maxstar® 200/210/280/350/400	50 mm Dinse-style	195378	129527	195379	129527	195377
Maxstar® 700/800	50 mm thread-lock	N/A	N/A	N/A	N/A	225028
Syncrowave® 200/210	50 mm Dinse-style	194722 (gas thru)	129527	194723 (gas thru)	129527	195380
Syncrowave® 250 DX/300/350 DX/400	50 mm Dinse-style	195378	129527	195379	129527	195377
	1/2 in. stud	105Z57	N/A	45V62	N/A	45V11
Multiprocess Machines						
Dimension™ 302/452/NT 450/650/652	1/2 in. stud	105Z57	N/A	45V62	N/A	45V11
Dynasty® 280 DX Multiprocess/ 300 Multiprocess	50 mm Dinse-style	195378	129527	195379	129527	195377
Maxstar® 280 Multiprocess	Tweco-style	N/A	191981	N/A	191981	N/A
Multimatic® 200/215/220 AC/DC	25 mm Dinse-style	273483 (gas thru)	127836	N/A	N/A	N/A
Multimatic® 235/255	50 mm Dinse-style	195378	129527	195379	129527	195377
PipeWorx	1/2 in. stud	105Z57	N/A	45V62	N/A	45V11
XMT® 304/350	50 mm Dinse-style	195378	129527	195379	129527	195377
XMT® 450	1/2 in. stud	105Z57	N/A	45V62	N/A	45V11
Engine-Driven Machines						
Most Big Blue®, Trailblazer®, Bobcat™, Blue Star® and Wildcat® models	1/2 in. stud	105Z57	N/A	45V62	N/A	45V11
Big Blue® 450 Duo CST	50 mm Dinse-style	195378	129527	195379	129527	195377
Other Adapter						
	Stud to Dinse-style adapter	232728	N/A	232728	N/A	232728

24 and 24-90 Modular Series Consumables

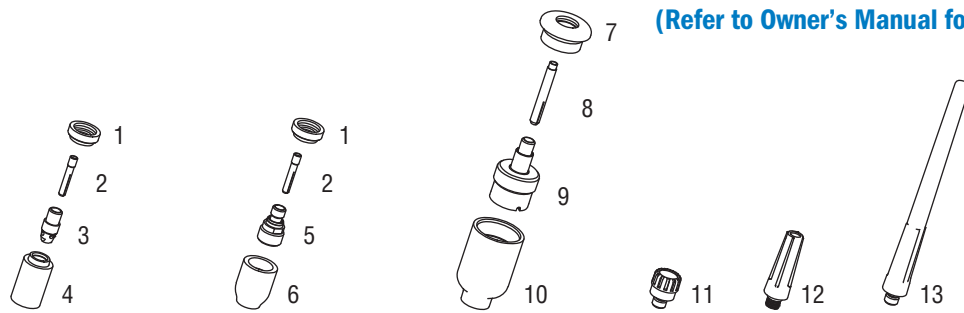
(Refer to Owner's Manual for additional replacement parts.)



Non-Gas Lens					
Electrode Size — inch (mm)	.040 (1.0)		1/16 (1.6)	3/32 (2.4)	
1 Insulator (required)	53N22		53N22	53N22	
2 Collet	53N16		53N14	24C332	
3 Collet Body	53N18		53N19	24CB332	
Nozzle Size — size # (inch)	.165	4 (1/4)	5 (5/16)	6 (3/8)	
4 Alumina	—	A53N24	A53N25	A53N27	
* Lava	53N23	53N24	53N25	53N27	
* Long Lava	—	53N28	—	53N26	
Collet Body Wrench					
5 53N20					
Gas Lens					
Electrode Size — inch (mm)	.040 (1.0)		1/16 (1.6)	3/32 (2.4)	
6 Insulator (required)	53N66		53N66	53N66	
7 Collet	53N63		53N64	24GLC332	
8 Gas Lens	45V42		45V43	45V44	
Nozzle Size — size # (inch)	4 (1/4)	5 (5/16)	6 (3/8)	7 (7/16)	8 (1/2)
9 Alumina Gas Lens	53N58	53N59	53N60	53N61	53N61S

*Not shown.

9-70, 9-90 and 9P Modular Series Consumables

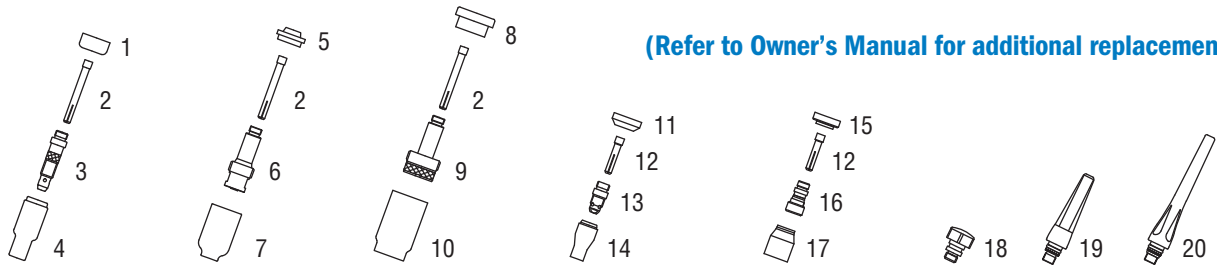


(Refer to Owner's Manual for additional replacement parts.)

Non-Gas Lens									
Electrode Size — inch (mm)	.040 (1.0)		1/16 (1.6)		3/32 (2.4)		1/8 (3.2)		
1 Insulator (required)	598882		598882		598882		598882		
2 Collet	13N21		13N22		13N23		13N24		
3 Collet Body	13N26		13N27		13N28		13N29		
Nozzle Size — size # (inch)	3 (3/16)	4 (1/4)	5 (5/16)	6 (3/8)	7 (7/16)	8 (1/2)	10 (5/8)	12 (3/4)	Short
4 Alumina	—	13N08	13N09	13N10	13N11	13N12	13N13	—	—
* Lava	—	13N14	13N15	13N16	13N17	13N18	13N19	—	—
* Long Lava	796F70	796F71	796F72	796F73	—	—	—	—	—
* X-Long Lava	796F74	796F75	796F76	796F77	—	—	—	—	—
Gas Lens									
Electrode Size — inch (mm)	.040 (1.0)		1/16 (1.6)		3/32 (2.4)		1/8 (3.2)		
1 Insulator (required)	598882		598882		598882		598882		
2 Collet	13N21		13N22		13N23		13N24		
5 Gas Lens	45V42		45V43		45V44		45V45		
Nozzle Size — size # (inch)	3 (3/16)	4 (1/4)	5 (5/16)	6 (3/8)	7 (7/16)	8 (1/2)	10 (5/8)	12 (3/4)	Short
6 Alumina Gas Lens	—	53N58	53N59	53N60	53N61	53N61S	—	—	—
Large Diameter Gas Lens									
Electrode Size — inch (mm)	.040 (1.0)		1/16 (1.6)		3/32 (2.4)		1/8 (3.2)		
7 Insulator (required)	54N63-20		54N63-20		54N63-20		54N63-20		
8 Collet	13N21L		13N22L		13N23L		13N24L		
9 Large Diameter Gas Lens	45V0204S		45V116S		45V64S		995795S		
Nozzle Size — size # (inch)	3 (3/16)	4 (1/4)	5 (5/16)	6 (3/8)	7 (7/16)	8 (1/2)	10 (5/8)	12 (3/4)	Short
10 Large Dia. Gas Lens	—	—	—	57N75	—	57N74	53N88	53N87	53N89
* Large Dia. Gas Lens-L	—	—	—	57N75L	—	57N74L	53N88L	53N87L	—
* Large Dia. Gas Lens-XL	—	—	—	57N75XL	—	57N74XL	53N88XL	53N87XL	—
* Large Dia. Gas Lens-XXL	—	—	—	57N75XXL	—	57N74XXL	53N88XXL	53N87XXL	—
Back Caps									
11 Short	41V33		12 Medium 41V35		13 Long 41V24				

*Not shown.

1726 and 1726P Modular Series Consumables



(Refer to Owner's Manual for additional replacement parts.)

Non-Gas Lens									
Electrode Size — inch (mm)	.040 (1.0)		1/16 (1.6)		3/32 (2.4)		1/8 (3.2)		5/32 (4.0)
1 Insulator (required)	18CG		18CG		18CG		18CG		18CG
2 Collet	10N22		10N23		10N24		10N25		54N20
3 Collet Body	10N30		10N31		10N32		10N28		406488
Nozzle Size — size # (inch)	4 (1/4)	5 (5/16)	6 (3/8)	7 (7/16)	8 (1/2)	10 (5/8)	12 (3/4)	Short	
4 Alumina	10N50	10N49	10N48	10N47	10N46	10N45	10N44	—	
* Long Alumina	—	10N49L	10N48L	10N47L	—	—	—	—	
* Lava	105Z43	105Z42	105Z44	105Z45	08N78	08N79	08N80	—	
* Long Lava	12N03	105Z60	12N02	105Z61	—	—	—	—	
Gas Lens									
Electrode Size — inch (mm)	.040 (1.0)		1/16 (1.6)		3/32 (2.4)		1/8 (3.2)		5/32 (4.0)
5 Insulator (required)	54N01		54N01		54N01		54N01		54N01
2 Collet	10N22		10N23		10N24		10N25		54N20
6 Gas Lens	45V24		45V25		45V26		45V27		45V28
Nozzle Size — size # (inch)	4 (1/4)	5 (5/16)	6 (3/8)	7 (7/16)	8 (1/2)	10 (5/8)	12 (3/4)	Short	
7 Alumina Gas Lens	54N18	54N17	54N16	54N15	54N14	—	—	54N19	
* Long Gas Lens	—	54N17L	54N16L	54N15L	—	—	—	—	
Large Diameter Gas Lens									
Electrode Size — inch (mm)	.040 (1.0)		1/16 (1.6)		3/32 (2.4)		1/8 (3.2)		5/32 (4.0)
8 Insulator (required)	54N63		54N63		54N63		54N63		54N63
2 Collet	10N22		10N23		10N24		10N25		54N20
9 Large Diameter Gas Lens	45V0204		45V116		45V64		995795		45V63
Nozzle Size — size # (inch)	4 (1/4)	5 (5/16)	6 (3/8)	7 (7/16)	8 (1/2)	10 (5/8)	12 (3/4)	Short	
10 Large Dia. Gas Lens	—	—	57N75	—	57N74	53N88	53N87	53N89	
* Large Dia. Gas Lens-L	—	—	57N75L	—	57N74L	53N88L	53N87L	—	
* Large Dia. Gas Lens-XL	—	—	57N75XL	—	57N74XL	53N88XL	53N87XL	—	
* Large Dia. Gas Lens-XXL	—	—	57N75XXL	—	57N74XXL	53N88XXL	53N87XXL	—	
Stubby Non-Gas Lens									
Electrode Size — inch (mm)	.040 (1.0)		1/16 (1.6)		3/32 (2.4)		1/8 (3.2)		
11 Insulator (required)	18CG20		18CG20		18CG20		18CG20		18CG20
12 Stubby Collet	10N22S		10N23S		10N24S		10N25S		10N25S
13 Stubby Collet Body	17CB20		17CB20		17CB20		17CB20		17CB20
Nozzle Size — size # (inch)	4 (1/4)	5 (5/16)	6 (3/8)	7 (7/16)	8 (1/2)	10 (5/8)	12 (3/4)	Short	
14 Stubby Alumina	13N08	13N09	13N10	13N11	13N12	13N13	—	—	
Stubby Gas Lens									
Electrode Size — inch (mm)	.040 (1.0)		1/16 (1.6)		3/32 (2.4)		1/8 (3.2)		
15 Insulator (required)	17GLG20		17GLG20		17GLG20		17GLG20		17GLG20
12 Stubby Collet	10N22S		10N23S		10N24S		10N25S		10N25S
16 Stubby Gas Lens	17GL040		17GL116		17GL332		17GL18		17GL18
Nozzle Size — size # (inch)	4 (1/4)	5 (5/16)	6 (3/8)	7 (7/16)	8 (1/2)	10 (5/8)	12 (3/4)	Short	
17 Alumina Gas Lens	53N58	53N59	53N60	53N61	53N61S	—	—	—	
Back Caps									
18 Short	57Y04		19 Medium 300M		20 Long 57Y02				

*Not shown.



Tungsten

Tungsten for the most demanding TIG welding applications!

Available in four types and industry-standard diameters, our line of Weldcraft™ tungsten electrodes has undergone rigorous testing to ensure the highest quality and durability. Color-coded packages include ten 7-inch (175 mm) tungsten electrodes.

Note: Refer to manufacturer SDS sheets for proper preparation and safety. Use proper ventilation/capture during preparation. Refer to manufacturer warning regarding ventilation.



Type	Diameter in. (mm)	Part #	Type	Diameter in. (mm)	Part #
2% Ceriated (EWCe-2)			Pure (EWP)		
Performs well in DC welding and arc starting at low-current settings, and offers excellent performance in AC processes.	0.040 (1.0)	WC040X7	Forms a clean, balled end when heated and provides good arc stability for AC welding with a balanced or unbalanced squarewave or sine wave.	0.040 (1.0)	—
	1/16 (1.6)	WC116X7		1/16 (1.6)	WP116X7
	3/32 (2.4)	WC332X7		3/32 (2.4)	WP332X7
	1/8 (3.2)	WC018X7		1/8 (3.2)	WP018X7
	5/32 (4.0)	WC532X7		5/32 (4.0)	—
2% Lanthanated (EWLa-2)			Rare Earth (EWG)		
Provides excellent arc starting, arc stability and re-ignition, and less tip erosion in AC or DC welding. Can substitute for 2% Thoriated.	0.040 (1.0)	WL2040X7	Combines the best of all alloying elements, and provides excellent arc stability in AC or DC welding.	0.040 (1.0)	—
	1/16 (1.6)	WL2116X7		1/16 (1.6)	WG116X7
	3/32 (2.4)	WL2332X7		3/32 (2.4)	WG332X7
	1/8 (3.2)	WL2018X7		1/8 (3.2)	WG018X7
	5/32 (4.0)	WL2532X7		5/32 (4.0)	—

Genuine Miller® Accessories



Accessory Kit AK-150MFC

Allows welding operators to customize their standard A-150 (WP-17) or A-125 (WP-9) TIG torch for

their specific application. Kit converts into 28 different torch styles while using the A-150 and A-125 existing cable. Includes collets, collet bodies, nozzles, torch heads, handle and more.



Accessory Kit AK-225MFC

Supplements W-225 (WP-225) modular torch packages. Includes five additional torch heads, collets, collet bodies, nozzles, handle and more.

collet bodies, nozzles, handle and more.



Cable Covers WC-3-10

10 ft. (3 m)

WC-3-22

22 ft. (6.7 m)

WC-3-48

48 ft. (14.6 m)



Wireless Remote Foot Control 301580

For remote current and contactor control. Receiver plugs directly into the 14-pin

receptacle of Miller machine. 90-foot (27.4 m) operating range.



Wireless Remote Hand Control 301582

For remote current and contactor control. Receiver plugs directly into the 14-pin receptacle of Miller machine. 300-foot (91.4 m) operating range.



RCC-14 Remote Contactor and Current Control 151086

East/west rotary-motion fingertip control attaches to TIG torch using two hook-and-loop fasteners. Includes 26.5-foot (8 m) cord with 14-pin plug.



RCCS-14 Remote Contactor and Current Control 043688

North/south rotary-motion fingertip control attaches to TIG torch using two hook-and-loop fasteners. Includes 26.5-foot (8 m) cord with 14-pin plug.



Low-Conductivity TIG Coolant 043810

Sold in multiples of four in 1-gallon recyclable plastic bottles. Miller coolants contains a base of ethylene glycol and deionized water

to protect against freezing to -37° Fahrenheit (-38°C) or boiling to 227° Fahrenheit (108°C).

Distributed by:

