

# WELDING GLOVES

HIGH QUALITY, COMFORTABLE HAND PROTECTION



**LINCOLN**<sup>®</sup>  
**ELECTRIC**

# WELDING GLOVES

Designed by The Welding Experts

## STICK



7 Series Stick/  
MIG Welding Gloves  
K4787-M / -L / -XL



Traditional Stick /  
MIG Welding Gloves  
K2979-ALL



8 Series Stick/  
MIG Welding Gloves  
K4788-M / -L / -XL



Heavy Duty Stick /  
MIG Welding Gloves  
K4082-M / -L / -XL

## TIG



MX Series TIG Welding Gloves  
K5132-M / -L / -XL



Leather TIG Welding Gloves  
K2981-M / -L / -XL



Premium TIG Welding Gloves  
K2983-M / -L / -XL

## MIG



MX Series MIG  
Welding Gloves  
K5131-M / -L / -XL



DynaMIG® Traditional  
MIG Welding Gloves  
K3805-M / -L / -XL / -2XL



DynaMIG HD  
MIG Welding Gloves  
K3806-M / -L / -XL / -2XL



Premium Leather MIG /  
Stick Welding Gloves  
K2980-M / -L / -XL

## GENERAL PURPOSE



Traditional Drivers Gloves  
K3669-M / -L / -XL / 2XL



Welders Drivers Gloves  
K3770-M / -L / -XL / -2XL



Cut Resistant A2 Drivers Gloves  
K3671-M / -L / -XL / 2XL



Premium Leather  
SteelWorker™ Gloves  
K2977-S / -M / -L / -XL / -2XL

## SPECIAL PURPOSE



ROLL CAGE® Rigging / Welding Gloves  
K3109-S / -M / -L / -XL / -2XL



Heat-Resistant Welding Gloves  
K2982-L / -XL

## WOMEN'S



Women's Stick / MIG Welding Gloves  
K3232-S / -M



Women's SteelWorker Gloves  
K3231-XS / -S / -M

# Selecting Welding Gloves

It's as easy as . . .

## 1 Primary Welding Process(es)



STICK



TIG



MIG



FLUX-CORED



GENERAL  
PURPOSE

## 2 Amperage Range



## 3 Rank Your Benefits



Heat  
Resistance



Comfort



Dexterity



Durability



Price



## WELDING GLOVE SELECTION EXAMPLES

Hank, a welder from Kentucky, primarily stick welds at 150 - 200 amps and values heat resistance and durability.

Product Recommendation:

Heavy Duty Stick/MIG Welding Gloves [K4082-Size]

Paul, a welder from Wisconsin, primarily MIG welds at 250 amps and values dexterity, comfort and price.

Product Recommendation:

DynaMIG MIG Welding Gloves [K3805-Size]

Usage  
Recommendations:

**Primary Welding Processes:**  
Stick, Flux-Cored, Pulsed MIG

**Secondary Welding Processes:**  
MIG

**Amperage Range:**  
50A – 450A

### TOP FEATURES



#### Grain Elkskin Construction

The premium top grain elkskin is naturally soft and flexible for great dexterity. This flexibility is coupled with excellent heat resistance as the elkskin resists cracking and stiffening while insulating the hand from heat.



#### Reinforced Design

Each seam is reinforced with a leather welt and sewn with Kevlar® thread to help prevent rips or tears and increase service life of the glove.



#### Foam Lined Top Hand with Unlined Palm

Unique internal design features an insulated top hand for enhanced heat resistance while the palm is unlined for improved dexterity and feel.

## Premium 7 Series Stick / MIG Welding Gloves



Usage  
Recommendations:

**Primary Welding Processes:**  
Stick, Flux-Cored, Pulsed MIG

**Secondary Welding Processes:**  
MIG, Hand Held Subarc

**Amperage Range:**  
50A – 600A

### TOP FEATURES



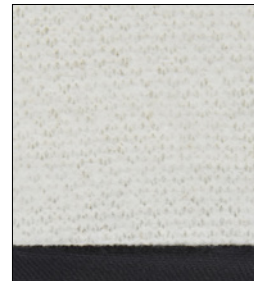
#### Grain Elkskin Construction

The premium top grain elkskin is naturally soft and flexible for great dexterity. This flexibility is coupled with excellent heat resistance as the elkskin resists cracking and stiffening while insulating the hand from heat.



#### Padded & Leather Reinforced Palm

Leather palm reinforcements improve durability while the cushioned palm improves grip and reduces hand fatigue for all day comfort



#### Supreme Heat Resistance

Designed for high amperage applications, the inside of glove features an insulated top hand, padded palm and full cotton liner for excellent heat resistance and comfort

## Premium 8 Series Stick / MIG Welding Gloves



## Traditional Stick / MIG Welding Gloves



### TOP FEATURES



**All Leather Construction**  
Designed for various applications, the complete leather outside construction protects the hands and wrist from spatter, flames and sparks while also providing heat resistance.



**Reinforced Seams**  
Each seam of the glove is reinforced with a piece of leather, called a welt, to prevent tears and increase durability.



**Comfortable & Heat Resistant Liners**  
The cotton hand liner provides heat resistance and comfort while the cotton twill inside cuff liner absorbs moisture.



Usage  
Recommendations:

**Primary Welding Processes:**  
Stick, Flux-Cored

**Secondary Welding Processes:**  
MIG, Pulsed MIG

**Amperage Range:**  
50A - 325A

## Heavy Duty Stick / MIG Welding Gloves



### TOP FEATURES



**Heavy Duty Leather Construction**  
Designed with meticulous leather specifications, this glove is built to provide excellent heat resistance, durability and safety.



**Three Layers of Protection**  
The three layer FlameSoft™ design combines premium leather, flame retardant foam and soft flame retardant cotton. This supremely comfortable design offers excellent heat resistance and unique safety features.



**Exceptional Durability**  
Stitched with 5 ply Kevlar® and reinforced with leather at high wear points and within each seam to increase durability.



Usage  
Recommendations:

**Primary Welding Processes:**  
Stick, Flux-Cored

**Secondary Welding Processes:**  
MIG, Pulsed MIG

**Amperage Range:**  
50A - 500A

Usage  
Recommendations:

**Primary Welding Processes:**  
TIG, Pulsed TIG

**Secondary Welding Processes:**  
MIG

**Amperage Range:**  
1A - 250A

### TOP FEATURES



**Durahide® Leather Construction**

Durahide® cow-skin leather offers high breathability, extreme dexterity, and improved grip.



**Maximized Mobility**

Unlined palm allows for better movement and unrestrictive feel.



**Elastic Wrist Band**

Top of wrist elastic band improves fit and helps prevent unwanted glove movement.

## MX Series TIG Welding Gloves



★★★★★



★★★★★



★★★★★



★★★★★



\$\$\$ \$\$\$

Usage  
Recommendations:

**Primary Welding Processes:**  
TIG, Pulsed TIG

**Secondary Welding Processes:**  
MIG

**Amperage Range:**  
1A - 300A

### TOP FEATURES



**Keystone Thumb**

The ergonomic keystone thumb design provides optimal fit and enhances flexibility.



**Padded Palm**

The cushioned palm improves grip and reduces hand fatigue for all day comfort.



**Heat Resistance**

Top hand cotton liner improves heat resistance without sacrificing dexterity.

## Premium TIG Welding Gloves



★★★★★



★★★★★



★★★★★



★★★★★



\$\$\$ \$\$\$

# Leather TIG Welding Gloves



## TOP FEATURES



### Grain Leather Construction

The form fitting grain goat skin leather provides optimal fit and feel for TIG welding. The split leather cuff provides abrasion for improved durability.



### Superior Dexterity

The lightweight leather and unique seam patterns provide high hand flexibility for improved dexterity.



### Reinforced Seams

The Kevlar stitched seams provide high tensile strength and the leather reinforced thumb seam fortifies a high wear point.



Usage Recommendations:

**Primary Welding Processes:**  
TIG, Pulsed TIG

**Secondary Welding Processes:**  
Low Amperage MIG

**Amperage Range:**  
1A - 225A

Usage  
Recommendations:

**Primary Welding Processes:**  
MIG, Pulsed MIG

**Secondary Welding Processes:**  
Stick, Flux-Cored

**Amperage Range:**  
50-350A

### TOP FEATURES



#### Durahide® Leather Construction

Durahide® cowhide leather maintains durability in high heat applications



#### Heat Resistant

Reinforced fingertips and palms for crucial heat resistance.



#### ANSI A4 Cut Resistance

100% internally lined with knit Kevlar® to provide ANSI A4 cut performance for material handling and welding.

## MX Series MIG Welding Gloves



Usage  
Recommendations:

**Primary Welding Processes:**  
MIG, Flux-Cored

**Secondary Welding Processes:**  
Stick, TIG

**Amperage Range:**  
1A - 300A

### TOP FEATURES



#### Grain & Split Leather

The split leather top hand resists heat and abrasion while the grain leather palm improves dexterity & comfort.



#### Elastic Fit

Integrated elastic band near the glove cuff creates a form fit for optimal comfort.



#### Heat Resistant Liner

The full hand soft cotton liner improves heat resistance and comfort.

## DynaMIG Traditional MIG Welding Gloves





# Premium MIG Welding Gloves



## TOP FEATURES



**Grain & Split Leather**  
The multi-leather design balances comfort, dexterity, heat resistance and durability to provide premium performance.



**Padded & Leather Reinforced Palm**  
Leather palm reinforcements improve durability and heat resistance while the cushioned palm helps grip and provides material handling support.



**FlameSoft Liner**  
The three layer liner combines premium leather, flame retardant foam and soft flame retardant cotton. This comfortable design offers great heat resistance and unique safety features.



Usage  
Recommendations:

**Primary Welding Processes:**  
MIG, Flux-Cored

**Secondary Welding Processes:**  
Stick, TIG

**Amperage Range:**  
50A - 400A

# DynaMIG HD Heavy Duty MIG Welding Gloves



## TOP FEATURES



**Grain & Split Leather**  
The split leather top hand resists heat and abrasion while the grain leather palm improves dexterity & comfort.



**Unique Heat Resistant Liner**  
The inside top hand features a 3 layer cotton & foam liner while the bottom hand features a 2 layer cotton liner.



**Moisture Absorbent Cuff**  
The inside cuff is lined with a moisture absorbent twill cotton for all day comfort.



Usage  
Recommendations:

**Primary Welding Processes:**  
MIG, Flux-Cored

**Secondary Welding Processes:**  
Stick, TIG

**Amperage Range:**  
50A - 400A

Usage  
Recommendations:

**Primary Applications:**  
Material Handling, Machine  
Operation

**Secondary Welding Processes:**  
Tack Welding, Low Amperage  
TIG Welding

**Amperage Range:**  
1A – 120A

Note: If glove becomes wet,  
discontinue use for welding  
applications until dry

### TOP FEATURES



#### 10 Inch Length

The glove measures 10 inches  
in length to improve clearance  
when used for material  
handling or with hand tools.



#### Keystone Thumb

The ergonomic keystone  
thumb design improves fit  
and enhances flexibility.



#### Unlined Interior

The unlined interior provides  
optimal touch, feel and  
dexterity.

## Traditional Drivers Gloves



Usage  
Recommendations:

**Primary Welding Processes:**  
TIG, Pulsed TIG

**Secondary Welding Processes:**  
Low Amperage MIG

**Amperage Range:**  
1A - 225A

### TOP FEATURES



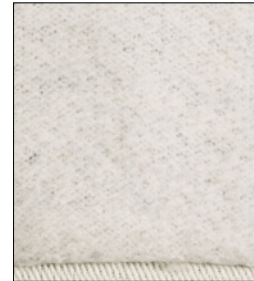
#### 10 Inch Length

The glove measures 10 inches  
in length to improve clearance  
when used for material  
handling or with hand tools.



#### Keystone Thumb

The ergonomic keystone  
thumb design improves fit  
and enhances flexibility.



#### Heat Resistant Liner

The full hand soft cotton  
liner improves heat resistance  
and comfort.

## Welders Drivers Gloves



# Cut Resistant Drivers Gloves



## TOP FEATURES



### Kevlar Cut Resistant Liner

100% internally lined with knit Kevlar® to provide ANSI A2 cut performance for material handling and welding.



### Keystone Thumb

The ergonomic keystone thumb design improves fit and enhances flexibility.



### Integrated Elastic Wrist

Top of wrist elastic band improves fit and helps prevent unwanted glove movement.



Usage Recommendations:  
**Primary Welding Processes:**  
 TIG, Material Handling, Machine Operation  
**Secondary Welding Processes:**  
 Low-Medium Amperage MIG  
**Amperage Range:**  
 1A – 250A

# Full Leather SteelWorker™ Welding Gloves



## TOP FEATURES



### Grain Leather Construction

The 100% grain leather provides comfort, dexterity and durability for light welding and a variety of material handling applications.



### Padded Palm

The cushioned palm provides a comfortable grip and material handling support.



### Elastic & Velcro® Wrist

Comfortable snug wrist fit to prevent sparks, dirt and other particles from entering.



Usage Recommendations:  
**Primary Welding Processes:**  
 TIG, Pulsed TIG  
**Secondary Welding Processes:**  
 MIG  
**Amperage Range:**  
 1A - 250A



Usage  
Recommendations:

**Primary Welding Processes:**  
Stick, Flux-Cored

**Secondary Welding Processes:**  
MIG, Pulsed MIG

**Recommended  
Amperage Range:**  
50A - 325A

### TOP FEATURES



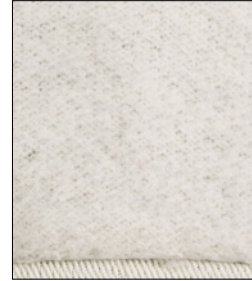
#### Designed for Women

Specially designed for female hand sizes to provide a comfortable, snug fit that protects from select welding, cutting and handling hazards.



#### All Leather Construction

Designed for various applications, the complete leather outside construction protects the hands and wrist from spatter, flames and sparks while also providing heat resistance.



#### Comfortable & Heat Resistant Liners

The cotton hand liner provides heat resistance and comfort while the cotton twill inside cuff liner absorbs moisture.

## Women's Traditional Stick / MIG Welding Gloves



Usage  
Recommendations:

**Primary Welding Processes:**  
TIG, Pulsed TIG

**Secondary Welding Processes:**  
Low Amperage MIG

**Recommended  
Amperage Range:**  
1A - 200A

### TOP FEATURES



#### Designed for Women

Specially designed for female hand sizes to provide a comfortable, snug fit that protects from select welding, cutting and handling hazards.



#### Grain Leather Construction

The high quality grain leather design provides comfort, dexterity and durability for light welding and a variety of material handling applications.



#### Padded Palm

The cushioned palm improves grip and provides material handling support. The Kevlar stitching adds durability for longer glove life.

## Women's Full Leather SteelWorker™ Welding Gloves



# Quick Order Guide

PART #	DESCRIPTION	SIZE
<b>STICK</b>		
K4787-M	Premium 7 Series Stick/MIG Welding Gloves	Medium
K4787-L	Premium 7 Series Stick/MIG Welding Gloves	Large
K4787-XL	Premium 7 Series Stick/MIG Welding Gloves	XL
K4788-M	Premium 8 Series Stick/MIG Welding Gloves	Medium
K4788-L	Premium 8 Series Stick/MIG Welding Gloves	Large
K4788-XL	Premium 8 Series Stick/MIG Welding Gloves	XL
K2979-ALL	Traditional MIG / Stick Welding Gloves	All (Large)
K4082-M	Heavy Duty MIG / Stick Welding Gloves	Medium
K4082-L	Heavy Duty MIG / Stick Welding Gloves	Large
K4082-XL	Heavy Duty MIG / Stick Welding Gloves	XL
<b>TIG</b>		
K5132-M	MX Series Premium TIG Welding Gloves	Medium
K5132-L	MX Series Premium TIG Welding Gloves	Large
K5132-XL	MX Series Premium TIG Welding Gloves	XL
K2981-M	Leather TIG Welding Gloves	Medium
K2981-L	Leather TIG Welding Gloves	Large
K2981-XL	Leather TIG Welding Gloves	XL
K2983-M	Premium Leather TIG Welding Gloves	Medium
K2983-L	Premium Leather TIG Welding Gloves	Large
K2983-XL	Premium Leather TIG Welding Gloves	XL
<b>MIG</b>		
K5131-M	MX Series A4 Cut Resistant MIG Gloves	Medium
K5131-L	MX Series A4 Cut Resistant MIG Gloves	Large
K5131-XL	MX Series A4 Cut Resistant MIG Gloves	XL
K3805-M	DynaMIG Traditional MIG Gloves	Medium
K3805-L	DynaMIG Traditional MIG Gloves	Large
K3805-XL	DynaMIG Traditional MIG Gloves	XL
K3805-2XL	DynaMIG Traditional MIG Gloves	2XL
K3806-M	DynaMIG HD MIG Gloves	Medium
K3806-L	DynaMIG HD MIG Gloves	Large
K3806-XL	DynaMIG HD MIG Gloves	XL
K3806-2XL	DynaMIG HD MIG Gloves	2XL
K2980-M	Premium Leather MIG / Stick Welding Gloves	Medium
K2980-L	Premium Leather MIG / Stick Welding Gloves	Large
K2980-XL	Premium Leather MIG / Stick Welding Gloves	XL

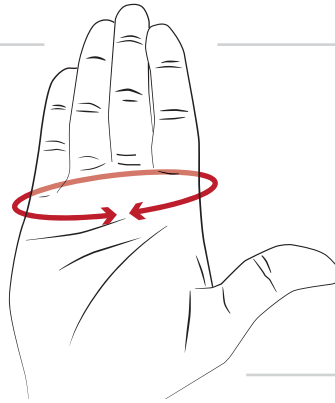
PART #	DESCRIPTION	SIZE
<b>GENERAL PURPOSE</b>		
K3769-M	Traditional Drivers Gloves	Medium
K3769-L	Traditional Drivers Gloves	Large
K3769-XL	Traditional Drivers Gloves	XL
K3769-2XL	Traditional Drivers Gloves	2XL
K3770-M	Welders Drivers Gloves	Medium
K3770-L	Welders Drivers Gloves	Large
K3770-XL	Welders Drivers Gloves	XL
K3770-2XL	Welders Drivers Gloves	2XL
K3771-M	Cut Resistant A2 Drivers Gloves	Medium
K3771-L	Cut Resistant A2 Drivers Gloves	Large
K3771-XL	Cut Resistant A2 Drivers Gloves	XL
K3771-2XL	Cut Resistant A2 Drivers Gloves	2XL
K2977-S	Full Leather SteelWorker Welding Gloves	Small
K2977-M	Full Leather SteelWorker Welding Gloves	Medium
K2977-L	Full Leather SteelWorker Welding Gloves	Large
K2977-XL	Full Leather SteelWorker Welding Gloves	XL
K2977-2XL	Full Leather SteelWorker Welding Gloves	2XL
<b>SPECIAL PURPOSE</b>		
K3109-S	Roll Cage Welding / Rigging Gloves	Small
K3109-M	Roll Cage Welding / Rigging Gloves	Medium
K3109-L	Roll Cage Welding / Rigging Gloves	Large
K3109-XL	Roll Cage Welding / Rigging Gloves	XL
K3109-2XL	Roll Cage Welding / Rigging Gloves	2XL
K2982-L	Heat-Resistant Welding Gloves	Large
K2982-XL	Heat-Resistant Welding Gloves	XL
<b>WOMEN'S</b>		
K3231-XS	Women's SteelWorker Welding Gloves	XS
K3231-S	Women's SteelWorker Welding Gloves	Small
K3231-M	Women's SteelWorker Welding Gloves	Medium
K3232-S	Women's MIG / Stick Welding Gloves	Small
K3232-M	Women's MIG / Stick Welding Gloves	Medium

# Welding Gloves Size Chart

## Instructions

- To determine glove size, measure the circumference of your hand just below your knuckles.

Refer to the table to the right to determine your size:



## Men's Gloves

GLOVE SIZE	HAND CIRCUMFERENCE - IN (CM)
Small	8 (20)
Medium	8.5 (21.5)
Large	9 (23)
XL	9.5 (24.5)
2XL	10 (25.5)

### CUSTOMER ASSISTANCE POLICY

The business of The Lincoln Electric Company® is manufacturing and selling high quality welding equipment, consumables, and cutting equipment. Our challenge is to meet the needs of our customers and to exceed their expectations. On occasion, purchasers may ask Lincoln Electric for information or advice about their use of our products. Our employees respond to inquiries to the best of their ability based on information provided to them by the customers and the knowledge they may have concerning the application. Our employees, however, are not in a position to verify the information provided or to evaluate the engineering requirements for the particular weldment. Accordingly, Lincoln Electric does not warrant or guarantee or assume any liability with respect to such information or advice. Moreover, the provision of such information or advice does not create, expand, or alter any warranty on our products. Any express or implied warranty that might arise from the information or advice, including any implied warranty of merchantability or any warranty of fitness for any customers' particular purpose is specifically disclaimed.

Lincoln Electric is a responsive manufacturer, but the selection and use of specific products sold by Lincoln Electric is solely within the control of, and remains the sole responsibility of the customer. Many variables beyond the control of Lincoln Electric affect the results obtained in applying these types of fabrication methods and service requirements.

Subject to Change – This information is accurate to the best of our knowledge at the time of printing. Please refer to [www.lincolnelectric.com](http://www.lincolnelectric.com) for any updated information.

\*All trademarks and registered trademarks are the property of their respective owners.

Publication E14.745 | Issue Date 05/22  
© Lincoln Global, Inc. All Rights Reserved.

**The Lincoln Electric Company**  
22801 St. Clair Avenue • Cleveland, OH • 44117-1199 • U.S.A.  
[www.lincolnelectric.com](http://www.lincolnelectric.com)