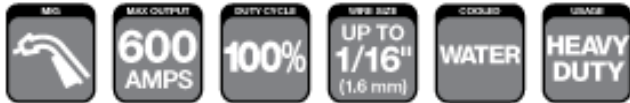


# Standard Water-Cooled

## 600 AMP MIG Gun Water-Cooled



### WELDING PROCESSES:

MIG (GMAW), Aluminum (GMAW),

### Standard Options Include:

- Rear Connector
- Standard Conductor Tube – Part No. WCS66-60 (Stock No. 1664-1106) on all guns up to 15 ft (4.6 m)
- Conduit Liner – 45 Series

### Industry

- Ship and Offshore Yards
- Repair and Maintenance
- Steel Industry
- Industrial and General Fabrication
- Automotive

### Water Coolers



### FEATURES

- **Designed for MIG Guns & TIG Torches** up to 500 Amps
- **12,000 BTU CP 75 degree differential** between ambient and return water temperature
- **1 GPM 60 psi** (Gear Pump)
- **Stainless Steel Construction** eliminates coolant contamination due to electrolyte and chemical reactions
- **High-Efficiency Radiator Design** pulls outside air through radiator
- **Vertical Model** has molded seamless plastic water tank: virtually eliminates leakage
- **Pump Bypass** to tank on rotary gear pump - keeps pump from overheating
- **Vane Pumps** are equipped with a bypass to eliminate excessive pump wear

### FEATURES

- **Ergonomic Handle** to reduce operator fatigue
- **Low Bench Weight** for easy to handle gun
- **Provides Cooling Benefits** to increase "weld" life of front end consumable
- **Cool Running** for maximum efficiency and comfort
- **High Water Flow Rates**
- **Large Water Lines** for maximum cooling
- **Threaded Water Line Connections** making hook-up easy (LH CGA)
- **Increased Duty Cycle** at high amperage applications
- **Large Diameter Wire Capacity** up to 7/64" (2.8 mm)
- **Outer Cover** protects components from weld spatter/abrasion
- **Simplified Direct Rear Plug Connections**
- **Replacement Cable Assemblies Available** - field-repairable power cable, water-lines and gas hose
- **Color Coded Water Lines** for easy identification to water-in & water-out
- **Adapts Easily** to Miller® and Lincoln® style machines

### WELDING PROCESSES: MIG (GMAV), TIG (GTAW)

### Standard Options Include

- Stainless Steel Construction
- 2 Gallon Reservoir
- Vertical or Horizontal Models Available
- Available options include either Gear Pump or Vane Pump

### TC900 Water Cooler

Description	Part No.	Stock No.
Cooler w/ Gear Pump 110V – 50/60 Hz	TC900-G	4010-1010
Cooler w/ Vane Pump 110V – 50/60 Hz	TC900-V	4010-4011

### TCV900 Water Cooler

Description	Part No.	Stock No.
Cooler w/ Gear Pump 110V – 50/60 Hz	TCV900-G	4010-1035
Cooler w/ Vane Pump 110V – 50/60 Hz	TCV900-V	4010-1036

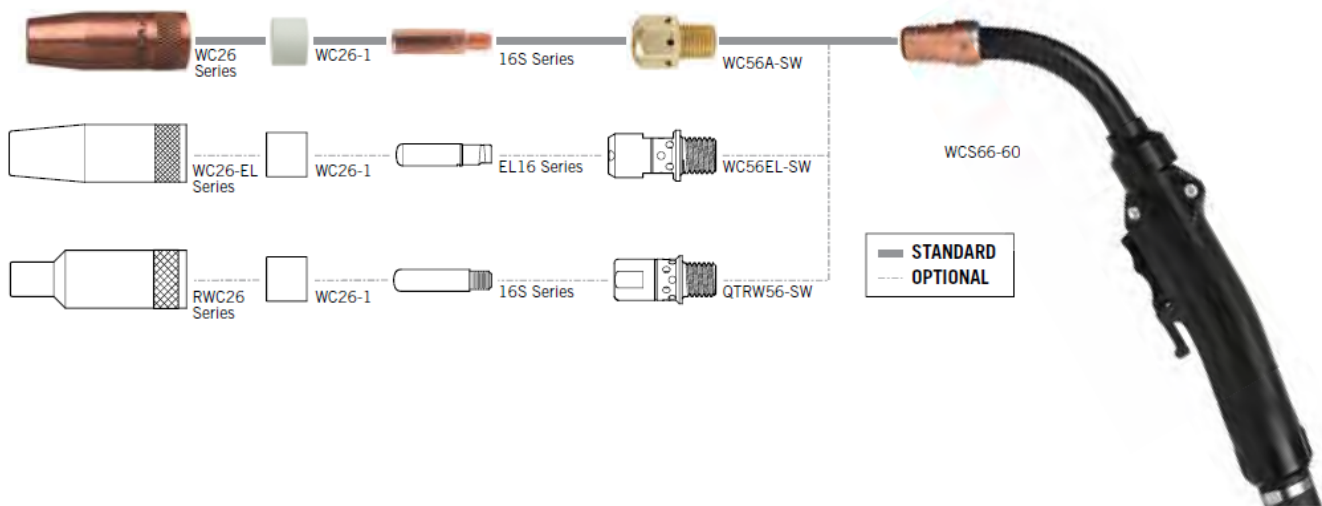
# STANDARD WATER-COOLED 600 AMP

SPECIFICATIONS	
Description	STANDARD WATER-COOLED 600 Amp
Welding Output CO2 Gas	600 A at 100%
Wire Diameter, Mild Steel	Up To 1/16" (1.6mm)
Wire Diameter, Stainless	Up To 1/16" (1.6mm)
Wire Diameter, Aluminum	Up To 1/16" (1.6mm)
Wire Diameter, Flux Core	Up To 1/16" (1.6mm)
Certification Mark (Standards)	CE IEC 60974-7
Operating Temperature	-10 to +40 °C
Cable Length	15 ft. (4.6 m)

## Tweco® Style Rear Connector

Adapter kits are available to fit Tweco rear connection to most wire feeders

Wire Size	Length	Part No.	Stock No.
.045" (1.2 mm)	15 ft (4.6 m)	WCS615-3545	1064-1106
1/16" (1.6 mm)	15 ft (4.6 m)	WCS615-116	1064-1116



## Conduit Liners – For Use With Steel Welding Wires

500-650 Amp – Steel Wound

Wire Size	Length	Part No.	Stock No.
.035" - .045" (0.9 – 1.2 mm)	15 ft (4.6 m)	42-3035-15	1420-1113
.052" – 1/16" (1.3 – 1.6 mm)	15 ft (4.6 m)	42-3035-25	1420-1115
.052" – 1/16" (1.3 – 1.6 mm)	25 ft (7.6 m)	42-4045-15	1420-1123
5/64" (2.0 mm)	15 ft (7.6 m)	42-4045-25	1420-1125
5/64" (2.0 mm)	25 ft (7.6 m)	42-4045-25	1420-1125
3/32" (2.4 mm)	15 ft (4.6 m)	42-116-15	1420-1124
7/64" (2.6 mm)	15 ft (4.6 m)	42-4045-25	1420-1125
1/8" (3.2 mm)	15 ft (4.6 m)	42-116-15	1420-1124

## Conduit Liners – For Use With Aluminium Welding Wires

500-650 Amp – Wire Nylon Wrap

Wire Size	Length	Part No.	Stock No.
1/16" (1.6 mm)	15 ft (4.6 m)	45N-116-15	1450-1013

# STANDARD WATER-COOLED 600 AMP

## Contact Tips – Eliminator Style

### 16S & 16ST Series

0.375" (9.5 mm) Outside Diameter - M8 x 1.25 Threads - 1.50" (38.1 mm)

Overall Length 25 per pack



Wire Size (in / mm)v	Tip I.D.	Standard		Tapered	
		Part No.	Stock No.	Part No.	Stock No.
.035" (0.9 mm)	.044" (1.12 mm)	<b>16S-35</b>	1160-1102	<b>16ST-35</b>	1160-1135
.040" (1.0 mm)	.048" (1.22 mm)	<b>16S-40</b>	1160-1103	NA	
.045" (1.2 mm)	.054" (1.37 mm)	<b>16S-45</b>	1160-1104	<b>16ST-45</b>	1160-1137
.052" (1.3 mm)	.064" (1.65 mm)	<b>16S-52</b>	1160-1105	<b>16ST-52</b>	1160-1138
1/16" (1.6 mm)	.073" (1.85 mm)	<b>16S-116</b>	1160-1106	<b>16ST-116</b>	1160-1139
5/64" (2.0 mm)	.090" (2.29 mm)	<b>16S-564</b>	1160-1109	NA	
3/32" (2.4 mm)	.106" (2.67 mm)	<b>16S-332</b>	1160-1110	NA	
7/64" (2.8 mm)	.120" (3.05 mm)	<b>16S-764</b>	1160-1111	NA	
3/64" AL (1.2 mm)	.059" (1.50 mm)	<b>16AS-364</b>	1160-1113	NA	
1/16" AL (1.6 mm)	.082" (2.08 mm)	<b>16AS-116</b>	1160-1114	NA	

### WC26 Series - Standard

3-Piece Nozzle Design – 1.062" (30 mm) Outside Diameter Use with Spatter Shield

Part No. WC26-1 (Stock No. 1264 -1009). 2 per pack



Nozzle Style	Bore Diameter	Part No.	Stock No.	Nozzle Design	Nozzle/Contact Tip Relationship
Thread-On (Standard)	5/8" (15.9 mm)	WC26-62	1264-1120	<b>Standard</b>	1/8" (3.2 mm) Tip Recess
	5/8" (15.9 mm)	WC26-62R	1264-1123	<b>Standard</b>	1/4" (6.4 mm) Tip Recess
	3/4" (19.5 mm)	WC26-75	1264-1130	<b>Standard</b>	1/8" (3.2 mm) Tip Recess
	3/4" (19.5 mm)	WC26-75R	1264-1133	<b>Standard</b>	1/4" (6.4 mm) Tip Recess
Thread-On* (Eliminator®)	1/2" (12.7 mm)	WC26-50EL*	1262-1031	<b>Standard</b>	1/8" (3.2 mm) Tip Recess
	5/8" (15.9 mm)	WC26-62EL*	1262-1032	<b>Standard</b>	1/8" (3.2 mm) Tip Recess
	5/8" (15.9 mm)	WC26-62ELF*	1262-1037	<b>Standard</b>	Tip Flush
	3/4" (19.5 mm)	WC26-75EL*	1262-1033	<b>Standard</b>	1/8" (3.2 mm) Tip Recess
	3/4" (19.5 mm)	WC26-75ELF*	1262-1038	<b>Standard</b>	5/32" (3.97 mm) Tip Protruding
	3/4" (19.5 mm)	WC26-75ELR*	1262-1042	<b>Standard</b>	Tip Flush

### RWC26 Series

Nickel plated nozzles.

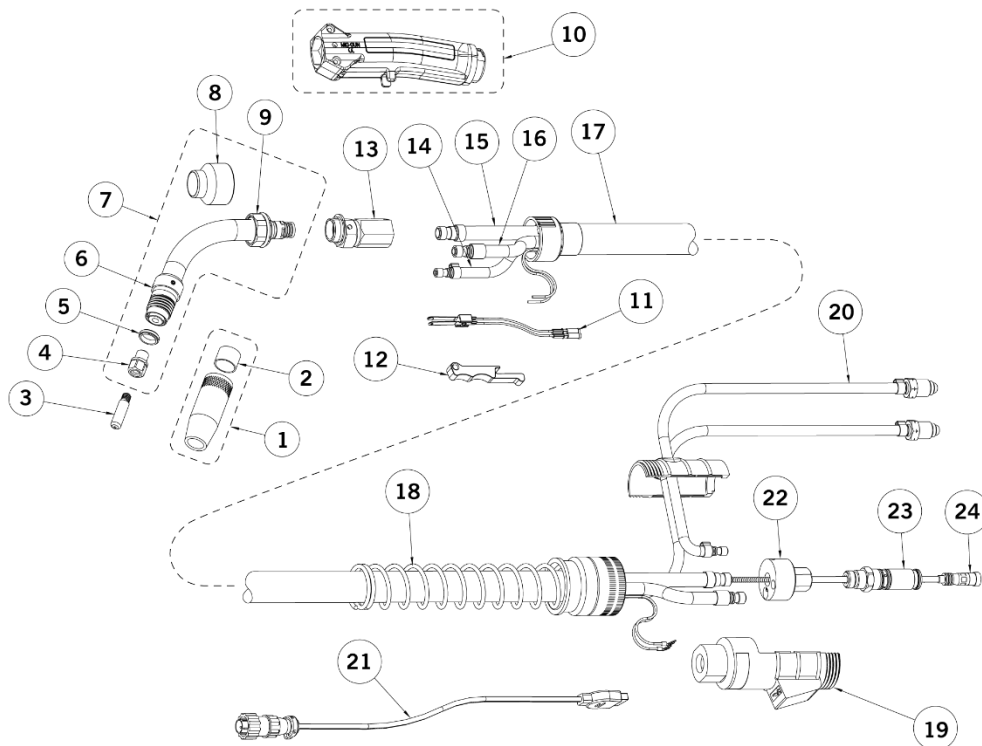
Use with Spatter Shield Part No. WC26EL-1 (Stock No. 1262-1049).

2 Per Pack



Nozzle Style	Bore Diameter	Part No.	Stock No.	Nozzle Design	Nozzle/Contact Tip Relationship
Thread-On	1/2" (12.7 mm)	RWC26-50	1264-1430	<b>Standard</b>	1/8" – 5/32" (3.2 mm – 3.97 mm) Tip Recess
	5/8" (15.9 mm)	RWC26-62	1264-1431	<b>Standard</b>	1/8" – 5/32" (3.2 mm – 3.97 mm) Tip Recess
	5/8" (15.9 mm)	RWC26-75	1264-1432	<b>Standard</b>	1/8" – 5/32" (3.2 mm – 3.97 mm) Tip Recess

# Replacement Parts



#	Description	Part No.	Stock No.
1	Nozzle	Refer To Page 3	
2	Spatter Shield	WC26-1	1264-1009
3	Contact Tip	Refer To Page 3	
4	Diffuser	WC56A-SW	1564-1145
5	Pressure Ring Insulator	WC36-R	2064-1036
6	Conductor Tube Housing	WCS36-H	1344-1145
7	Conductor Tube	WCS66-60	1664-1106
8	Nut Cover Insulation	--	--
9	Locking Nut	WC66-N	2064-2067
10	Handle Assembly	W6R-H	2064-2031
11	Trigger Blade Assembly	EL96-B	2060-2606
12	Trigger	EL96	2060-2605
13	Front Connector Block	WC106	2064-2106
14	Water Hose IN, 10 ft (3 m)	WC610-WH	1764-2131
	Water Hose IN, 15 ft (5 m)	WC615-WH	1764-2133

#	Description	Part No.	Stock No.
	Gas Hose, 10 ft (3 m)	WC610-GH	1764-2121
15	Gas Hose, 12 ft (4 m)	WC612-GH	1764-2122
	Gas Hose, 15 ft (5 m)	WC615-GH	1764-2123
	Power Cable, 10 ft (3 m)	WC610-PC	1764-2111
16	Power Cable, 12 ft (4 m)	WC612-PC	1764-2112
	Power Cable, 15 ft (5 m)	WC615-PC	1764-2113
17	Complete Cable Assembly, 10 ft (3 m)	WC600-10	1764-2101
	Complete Cable Assembly, 15 ft (5 m)	WC600-15	1764-2103
18	Rear Strain Relief Spring	QR-SPHD	3045-1178
19	Rear Case	W6RC	2064-2600
20	Water Hose Out	WC603-WH	1764-2130
21	Control Wire (Tweco®)	MAK-354	2642-2460
	Control Wire (Miller®)	MSAK-354	2642-2470
	Control Wire (Lincoln®)	LAK-354	2642-2450
22	Rear Connector Block (Direct Plug)	WC6-170H	2064-2171
	Rear Connector Block (Euro Plug)	WC174X-B	2044-2182
23	Connector Plug	Refer To Full Line Catalog	
24	Conduit Assembly	Refer To Page 2	



ESAB / esab.com

